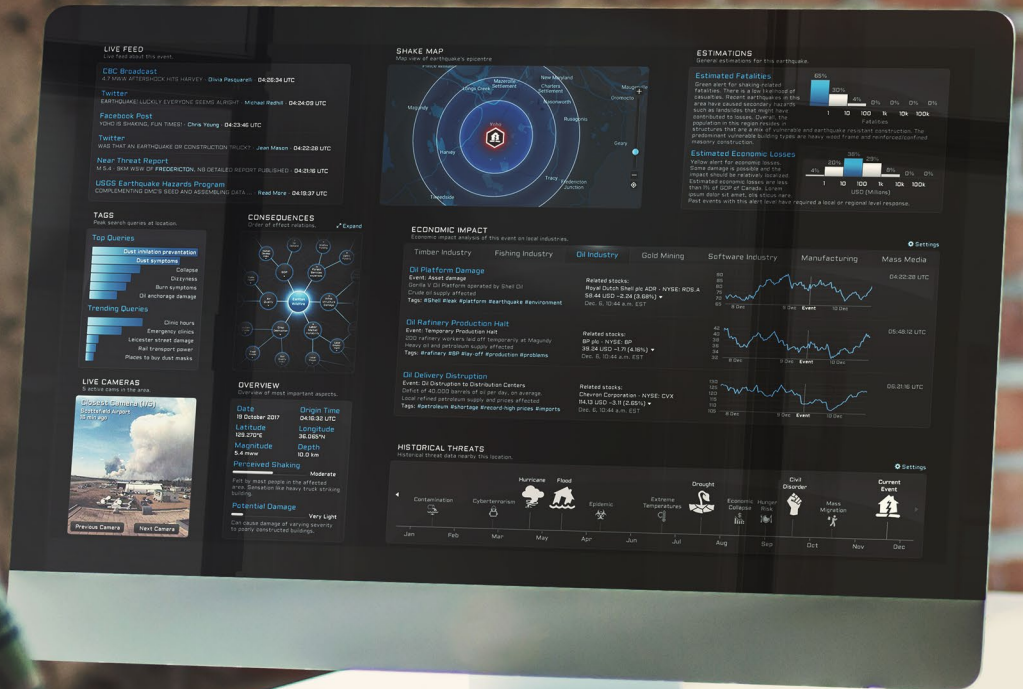


How is your organization monitoring global events impacting your organization, your clients, and your employees? Staying on top of potential threats allows you to be aware, prepare and control how your business responds. Near Threat can help you do just that.



NEAR
THREAT

Global Monitoring
Interface



www.nearthreat.com

Near Threat is an online service designed to provide consolidated, real-time information on the status of various types of threats around the globe. Our cutting-edge A.I. sifts through billions of points of data everyday to give you the critical information you need.

The Global Monitoring Interface is our most comprehensive package offering both a map and information list of every threat we track on the planet. This interface provides the ability to filter by threat type, location and more. Configure your GMI to notify you of the events most critical to you and keep you up to date on how they evolve. Track wildfires in Idaho, Mad Cow disease in Montana, or bombings in France. With direct access to source data and the Near Threat Credibility Score, you'll know where the information is coming from and be empowered to make decisions.

Be in the know.

Be prepared.

Be in control.

NEAR THREAT

Global Monitoring Interface

The screenshot displays the 'NEAR THREAT Global Monitoring Interface'. At the top, there are navigation tabs for various threat categories: Contamination, Cyberterrorism, Hurricane, Flood, Epidemic, Extreme Temperatures, Drought, Economic Collapse, Hunger Risk, Disorder, and Event. Below these is a 'WORLDWIDE THREAT LIST' table with columns for Event, Category, Identified, Last Update, Location, Credibility, and Media Coverage. The table lists several threats, including a Biological threat (Measles Disease) in Boston, MA, USA, and a Nuclear Waste threat in the Atlantic Ocean. To the left of the table is a map showing the global distribution of threats. To the right, there are sections for 'NEURAL NETWORK DISCOVERY', 'REPORT SECTION', 'THREAT NOTIFICATION PREFERENCES', and 'SHAKE MAP'. The interface is dark-themed with white and red text.

Event	Category	Identified	Last Update	Location	Credibility	Media Coverage
Disease #D17314	Biological Impact Rating II	0 days ago Monitored since 3 Mar 2018 Remove tracking	4 minutes ago No other threats associated.	Boston, MA USA (Show 4)	Confirmed	Extensive 159 news, 52 mentions #outbreak #ebola #ebola #scasities
Nuclear Waste #NW5873	Nuclear Impact Rating II	24 minutes ago Not Monitored Add to your threats	29 minutes ago Measured 3mR/hour 8km possible fallout No other threats associated.	Uplie, Alajuela Costa Rica (Show 3)	Propable	Insignificant 2 news, 4 mentions #human-made #fnc #n #n #n
Wildfire #W17241	Fire Impact Rating I	7 hours ago Monitored since last week Remove tracking	0 seconds ago 37ha affected, 25MW radiative power 2 Fires associated with this threat.	Fredonction, NB Canada (Show 4)	Definite	Insignificant 7 mentions #fnc #lightning #CC-30 Tasker
Earthquake #E40973	Earth Impact Rating I	3 minutes ago Not Monitored Add to your threats	54 seconds ago 4.6 Magnitude at 3.8km depth No other threats associated.	Saint John, NB Canada (Show 3)	Definite	Limited 2 news, 3 mentions #fnc #n #n #n #n
Contamination #C09432	Water Impact Rating I	4 days ago Monitored since yesterday Remove tracking	24 minutes ago 870 ppb of Lead Not safe to drink No other threats associated.	Santa Clara, Cuba (Show 4)	Questionable	No Media Coverage #fnc #fnc #fnc #fnc
Wildfire #W16401	Fire Not Rated	16 hours ago Not Monitored Add to your threats	36 minutes ago 18ha affected, 5MW radiative power 2 Fires associated with this threat.	Fredonction, NB Canada (Show 4)	Doubtful	No Media Coverage #fnc #fnc #fnc #fnc



Customize alerts to notify you of events that matter most to your business.



We monitor events that have real impact; e.g. forest fires affecting crop prices or political unrest affecting mining areas.



Hone in on what you want to see with Near Threat's powerful search and filter options - threat type, location, keywords and more.



Near Threat consolidates an extensive list of key sources to optimize your threat monitoring in a single interface.



Near Threat's proprietary interface allows you to see the big picture at a global level or zero in on a region or city.



The Near Threat Credibility Scale will give you a clear indication of the veracity of an event by cross referencing multiple sources.